

# TETRA 430

STAINLESS STEEL SINK

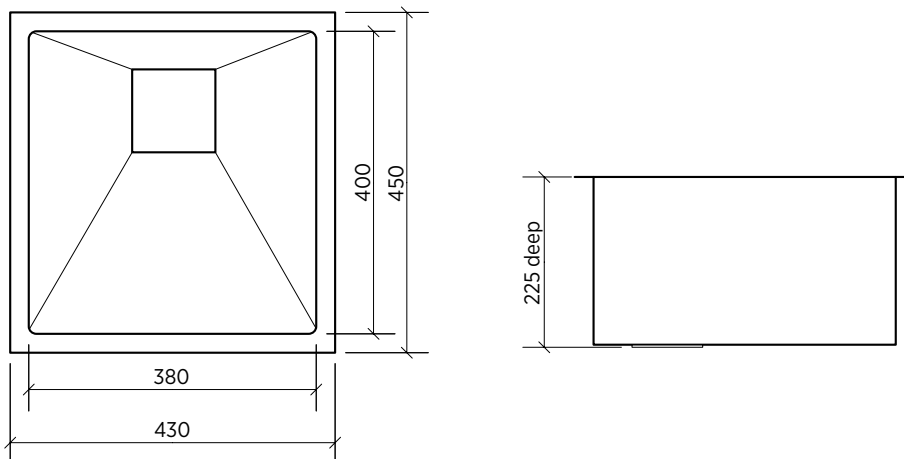


**Sink art. Bold, minimalist aesthetic. Handcrafted excellence. Undermount or abovemount.**

Create an atmosphere of design excellence with a Tetra handcrafted stainless steel sink. Inspired by a strong reductive aesthetic, the Tetra series perfectly complements minimalist and contemporary architectural design. Superior edge finish means that Tetra sinks are suitable for abovemount or undermount installation.

- minimalist bold design, refined industrial aesthetic
- beautiful lines and geometries
- highest quality individually handcrafted
- designed for abovemount or undermount installation, superior edge finish
- 1.2mm thick premium 304 grade stainless steel
- sleek brushed satin finish
- deep, large capacity bowls
- easy to clean corners, 10mm radii
- sound deadening
- distinctive square basket waste

SUMMARY	Single bowl, standard	
ORDER CODE	191695 Tetra 430	old code: SKS-T430
BOWL SIZE	380 x 400 mm, 225 mm deep	
CAPACITY	33 litres	
WASTE	Includes square basket waste	
ACCESSORIES	A variety of accessories is available.	



# SEIMA

bathroom | kitchen | laundry

seima.com.au

**Please note**

- All measurements are in millimetres.
- Always use the actual product to verify cutout.
- Use silicone sealant. DO NOT USE EPOXY TYPE ADHESIVES.
- Specifications may vary without notice as part of our continuous improvement practices.

tetra-430-ds | v 3.0